



## A Gift From Nature Supplies

Orlando, FL 3289  
info@agiffromnaturesupplies.com  
407-704-8519

## Sample 368-030222-170

### AGFN D9 Gummy- Sativa Strawberry Kush

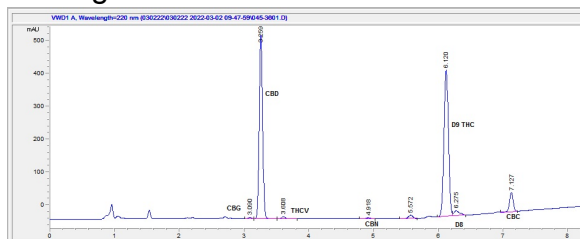
Sample Submitted: 03-02-2022; Report Date: 03-03-2022

Null Sample Unit Size: 5.00 g

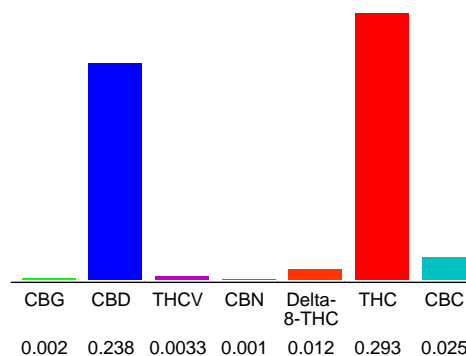
## AGFN D9 Gummy- Sativa Strawberry Kush

Edible: Cookie

### Chromatogram



### Cannabinoid Profile



### Cannabinoid Profile by HPLC

**0.29%**  
Calculated THC Yield

**0.24%**  
Calculated CBD Yield

**0.57%**  
Total Cannabinoids

Cannabinoid	% wt	mg/unit
CBG	0.002	0.1
CBD	0.238	11.9
THCV	0.0033	0.165
CBN	0.001	0.05
Delta-8-THC	0.012	0.6
THC	0.293	14.65
CBC	0.025	1.25
<b>Total Cannabinoids</b>	<b>0.57</b>	<b>28.7</b>
<b>Calculated THC Yield</b>	<b>0.29</b>	<b>14.65</b>
<b>Calculated CBD Yield</b>	<b>0.24</b>	<b>11.90</b>

Calculated Maximum THC Yield =  $THC + 0.877 * THCA$   
Calculated Maximum CBD Yield =  $CBD + 0.877 * CBDA$

**Marin Analytics, LLC**  
250 Bel Marin Keys Blvd, Suite D4  
Novato, CA 94949  
415-936-6477 / sarabiancalana1@gmail.com

*Sara Biancalana*  
**Sara Biancalana**  
Chief Scientist

This sample has been tested by Marin Analytics, LLC using valid testing methodologies and a quality system. Values reported relate only to the sample tested. Marin Analytics, LLC makes no claims as to the efficacy, safety or other risks associated with any detected or non-detected levels of any compounds reported herein. This Certificate shall not be reproduced except in full, without the written approval of Marin Analytics, LLC.