



## A Gift From Nature Supplies

Orlando, FL 3289  
info@agiffromnaturesupplies.com  
407-704-8519

## Sample 368-030222-171

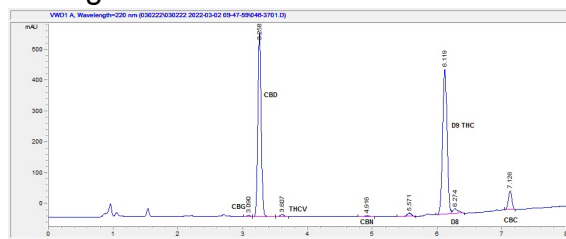
### AGFN D9 Gummy- Indica- Strawberry Breeze

Sample Submitted: 03-02-2022; Report Date: 03-03-2022  
nullSample Unit Size: 5.00 g

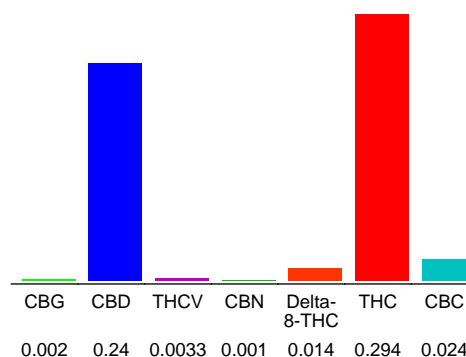
## AGFN D9 Gummy- Indica- Strawberry Breeze

Edible: Candy

### Chromatogram



### Cannabinoid Profile



### Cannabinoid Profile by HPLC

**0.29%**  
Calculated THC Yield

**0.24%**  
Calculated CBD Yield

**0.58%**  
Total Cannabinoids

Cannabinoid	% wt	mg/unit
CBG	0.002	0.1
CBD	0.24	12.0
THCV	0.0033	0.165
CBN	0.001	0.05
Delta-8-THC	0.014	0.7
THC	0.294	14.7
CBC	0.024	1.2
<b>Total Cannabinoids</b>	<b>0.58</b>	<b>28.9</b>
<b>Calculated THC Yield</b>	<b>0.29</b>	<b>14.70</b>
<b>Calculated CBD Yield</b>	<b>0.24</b>	<b>12.00</b>
Calculated Maximum THC Yield = THC + 0.877 * THCA		
Calculated Maximum CBD Yield = CBD + 0.877 * CBDA		

### Marin Analytics, LLC

250 Bel Marin Keys Blvd, Suite D4  
Novato, CA 94949

415-936-6477 / sarabiancalana1@gmail.com

**Sara Biancalana**  
Chief Scientist

This sample has been tested by Marin Analytics, LLC using valid testing methodologies and a quality system. Values reported relate only to the sample tested. Marin Analytics, LLC makes no claims as to the efficacy, safety or other risks associated with any detected or non-detected levels of any compounds reported herein. This Certificate shall not be reproduced except in full, without the written approval of Marin Analytics, LLC.