



## A Gift From Nature Supplies

Orlando, FL 3289  
info@agiffromnaturesupplies.com  
407-704-8519

## Sample 368-020222-152

AGFN D9 Gummy-Sativa- Hawaiian Pineapple

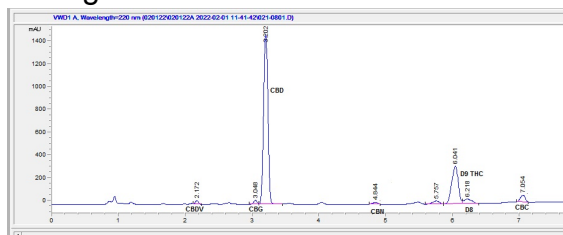
Sample Submitted: 02-02-2022; Report Date: 02-03-2022

Null Sample Unit Size: 5.49 g

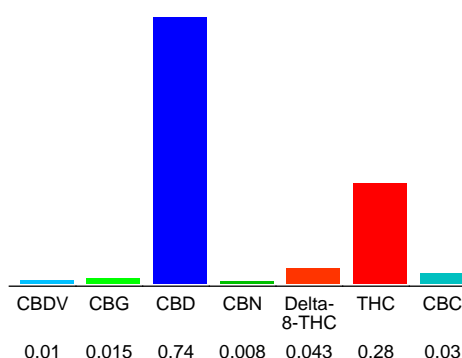
## AGFN D9 Gummy-Sativa- Hawaiian Pineapple

Edible: Candy

### Chromatogram



### Cannabinoid Profile



### Cannabinoid Profile by HPLC

**0.28%**

Calculated THC Yield

**0.74%**

Calculated CBD Yield

**1.13%**

Total Cannabinoids

Cannabinoid	% wt	mg/unit
CBDV	0.01	0.5492
CBG	0.015	0.8238
CBD	0.74	40.64
CBN	0.008	0.4394
Delta-8-THC	0.043	2.362
THC	0.28	15.38
CBC	0.03	1.648
<b>Total Cannabinoids</b>	<b>1.13</b>	<b>61.8</b>
<b>Calculated THC Yield</b>	<b>0.28</b>	<b>15.38</b>
<b>Calculated CBD Yield</b>	<b>0.74</b>	<b>40.64</b>
Calculated Maximum THC Yield = THC + 0.877 * THCA		
Calculated Maximum CBD Yield = CBD + 0.877 * CBDA		

### Marin Analytics, LLC

250 Bel Marin Keys Blvd, Suite D4  
Novato, CA 94949

415-936-6477 / sarabiancalana1@gmail.com

Sara Biancalana  
Chief Scientist

This sample has been tested by Marin Analytics, LLC using valid testing methodologies and a quality system. Values reported relate only to the sample tested. Marin Analytics, LLC makes no claims as to the efficacy, safety or other risks associated with any detected or non-detected levels of any compounds reported herein. This Certificate shall not be reproduced except in full, without the written approval of Marin Analytics, LLC.